



Climate₁₀

 MONITOR AUDIO®

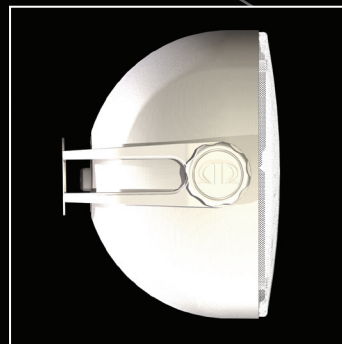
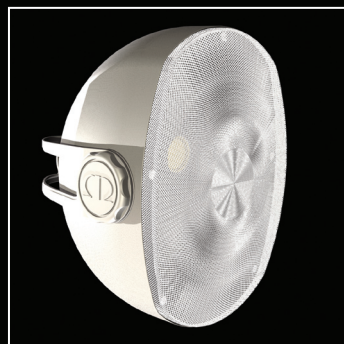
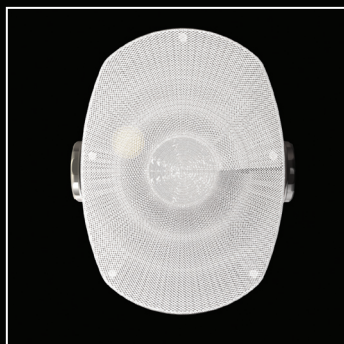
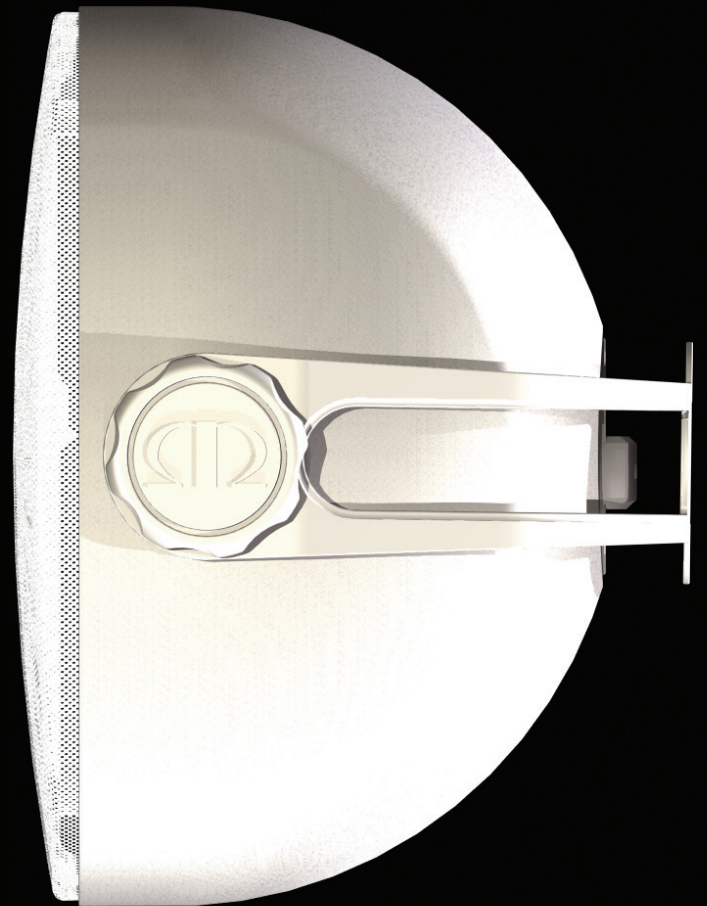
Monitor Audio's All-Weather Speaker

Now you can enjoy high quality sound outside your home with the latest introduction to Monitor Audio's loudspeaker range. Imbued with the performance, design innovation and build quality that have made Monitor Audio's speakers famous around the world, the new Climate 10 loudspeaker has been created for all-weather environments, yet is a genuine hi-fi speaker worthy of the name.

This means that the clear, rhythmic and utterly musical qualities of Monitor Audio's home speakers can now be enjoyed outside in the garden, by the pool or on the patio. The innovative use of an additional bass driver will provide Climate 10 with the superior low frequency performance that ordinary outdoor speakers struggle to reproduce. In rain, wind, snow or sun, you'll know the glorious full-range sound that has won acclaim around the world will be available to invest every occasion with the perfect atmosphere.

You can rely on Monitor Audio's meticulous engineering to protect the Climate 10 loudspeaker's advanced drive units and precision-made motor structures from weather ingress. Its solid, sealed ABS enclosure is specially treated to resist moisture and the effects of prolonged UV exposure; and its aluminium grille and bracket are naturally equipped to prevent rust.

A key feature of the Climate 10 design is versatility. Its innovative bracket assembly can be fixed horizontally or vertically using just three screws. Once installed, it can be rotated through a very wide angle, allowing you the flexibility to direct the sound precisely for the maximum musical effect.





Moulded into the Climate 10's tough but stylishly sculpted rear casing is the terminal recess incorporating chamfered sides for easy drainage. A cover is supplied to protect the terminal posts from storm-force weather.

TYPICAL APPLICATIONS

- Patio, poolside, yacht.
- Multi-room audio systems.
- Home theatre systems.
- Lounge areas, bars, boutiques.
- Boardrooms and offices.
- Airports, convention centres, hotels.
- Live theatre/concert hall background.
- Sports arenas.

TECHNICAL SPECIFICATION

Drivers:-	1 x 5" MMP [®] 2 bass/ mid-range driver 1 x 4" ABR unit 1 x 1" C-CAM [®] gold dome tweeter
Amplifier requirements:	10-60 watts (R.M.S)
Power handling:	60 watts (R.M.S)
Sensitivity:	88dB (1W@1m)
Impedance:	6 ohms (nominal)
Frequency response:	80Hz -6dB (anechoic)
Weight:	2.3 kg
Dimensions:	H 260 x W 208 x D 196 (mm) H 10 1/4" x W 8 3/16" x D 7 11/16" (Inches)
Colours:	Black or White

Great sound is assured by the use of Monitor Audio's proprietary driver technologies. Developed and refined over many years for accurate reproduction and robust reliability, the Climate 10's C-CAM[®] gold dome tweeter and MMP[®]Mk2 bass/mid-range driver designs will capture the dynamic intensity of live performances as well as the crystal clarity of vocals and acoustic instruments. Sound quality is optimised for the open environment through the use of an additional sealed ABR (Auxiliary Bass Radiator) to enrich low frequencies with extra punch and penetration.

From any angle, Monitor Audio's Climate 10 presents an impregnable barrier to meteorological or environmental attack. Wherever you are, whatever the weather, you'll enjoy better sound and complete reliability through Monitor Audio's atmospheric star.

For more details on Monitor Audio Custom Install products visit:

www.installfocus.com



For details of your nearest Monitor Audio dealer visit our website at:

www.monitoraudio.co.uk

T. +44 (0)1268 740580

E. info@monitoraudio.co.uk

UK

www.monitoraudioussa.com

T. +1 905 428 2800

E. info@monitoraudio.com

USA